



# Movement Coordination Centre Europe

## Military Transportation Broker



LtCol (HUN A) Robert Kovacs, AT Cell Chief



# Aim

To provide an overview of the MCCE





# Agenda

1

**Organization**

2

**Exchange of Services**

3

**The Cells**

4

**Cooperation**

5

**AoB**





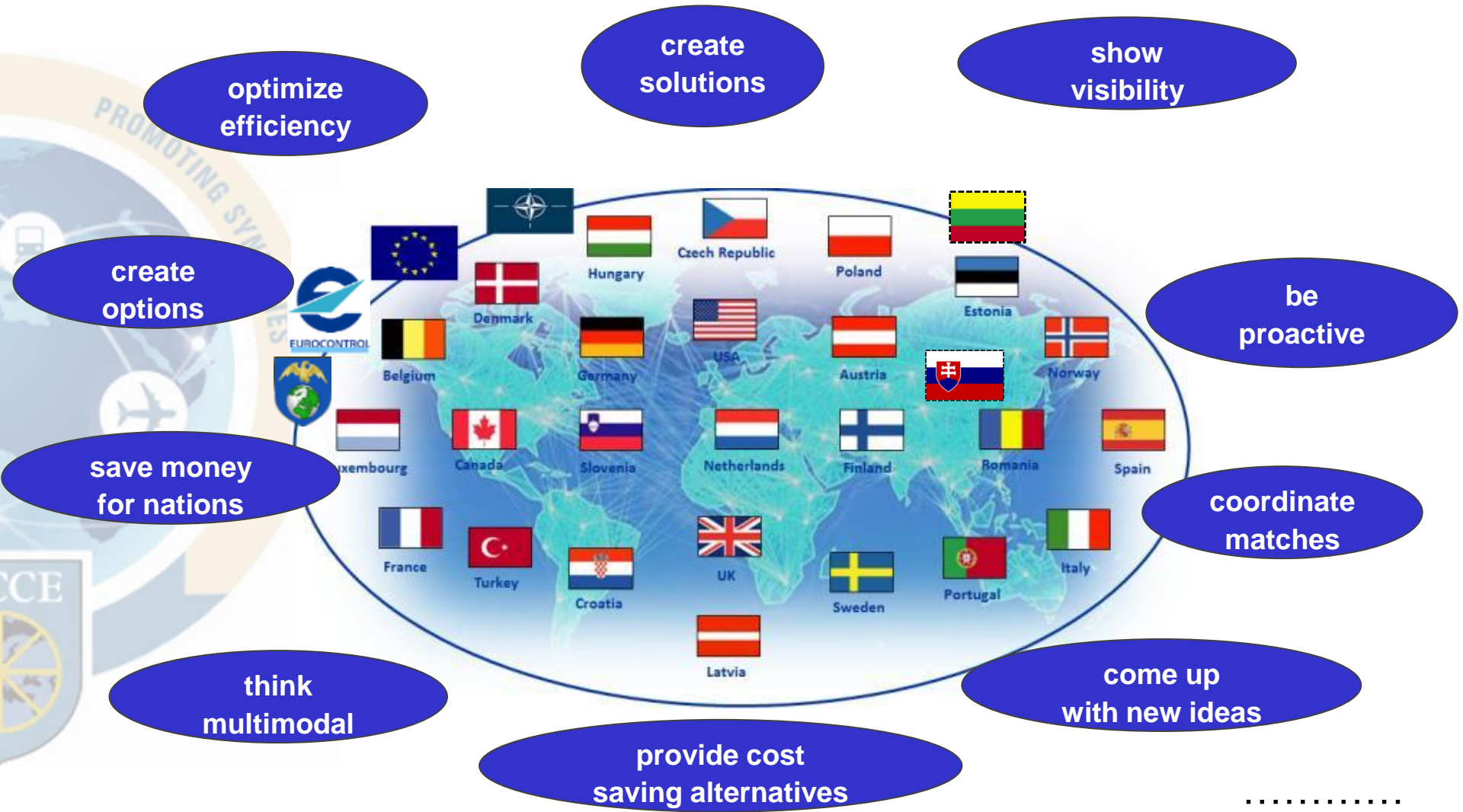
# Independent



**independent organization**

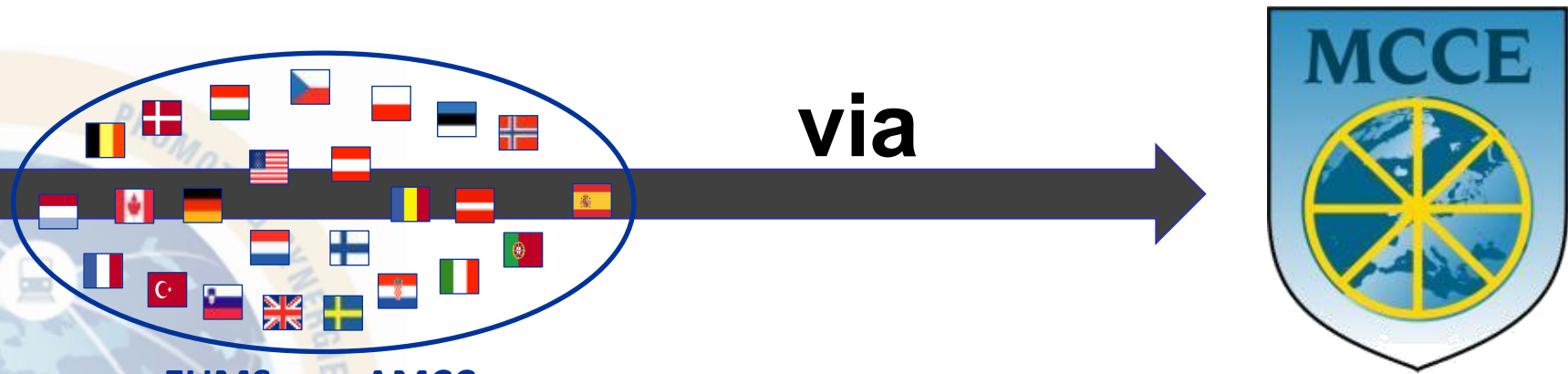


# 26 (1) Member Nations



MCCE provides satellite solutions

# Use of national contractors



via



## use of contractors examples



HAW



SALCC



EATC



MSSC



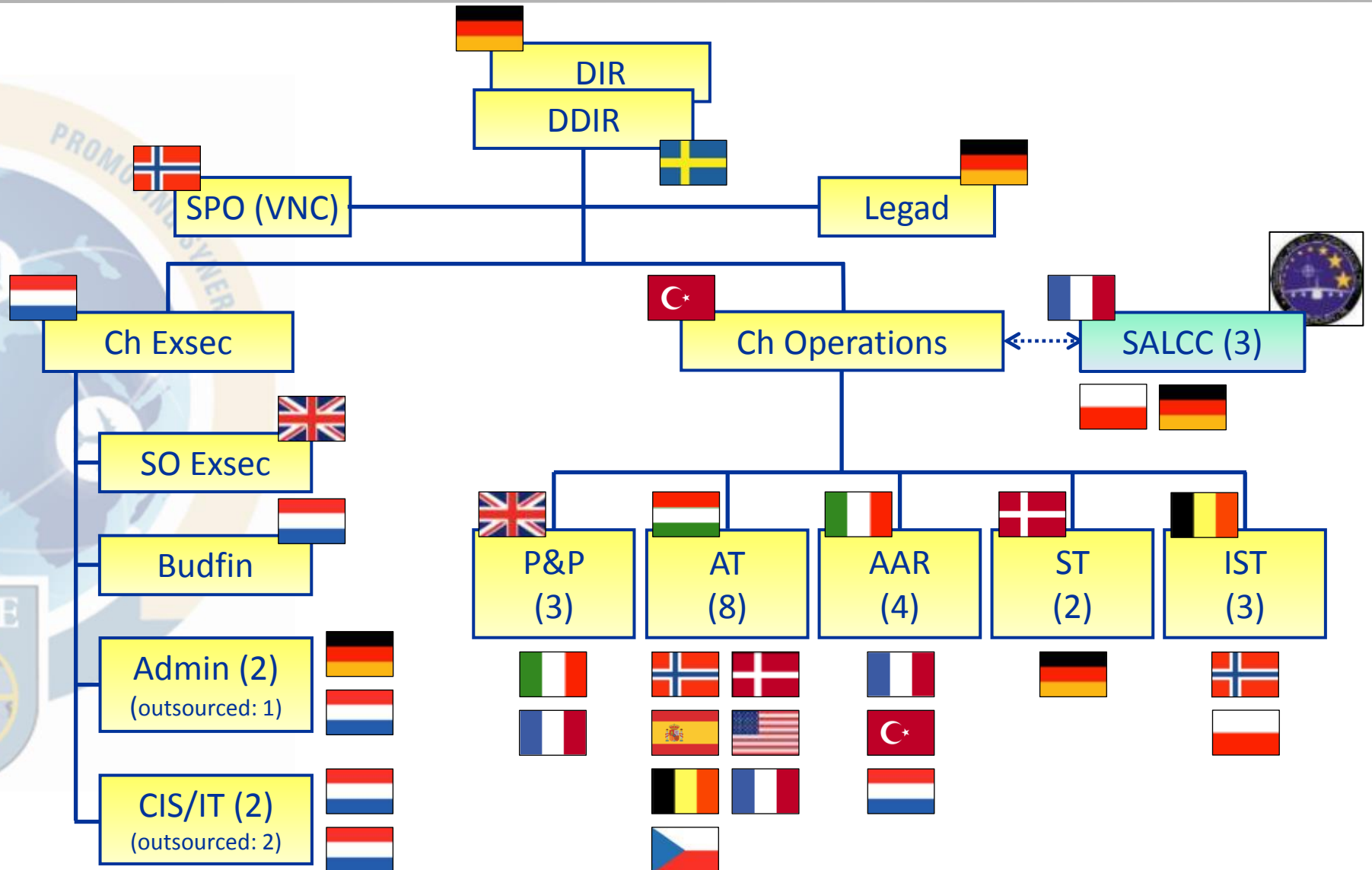


# Worldwide for our Nations 24/7





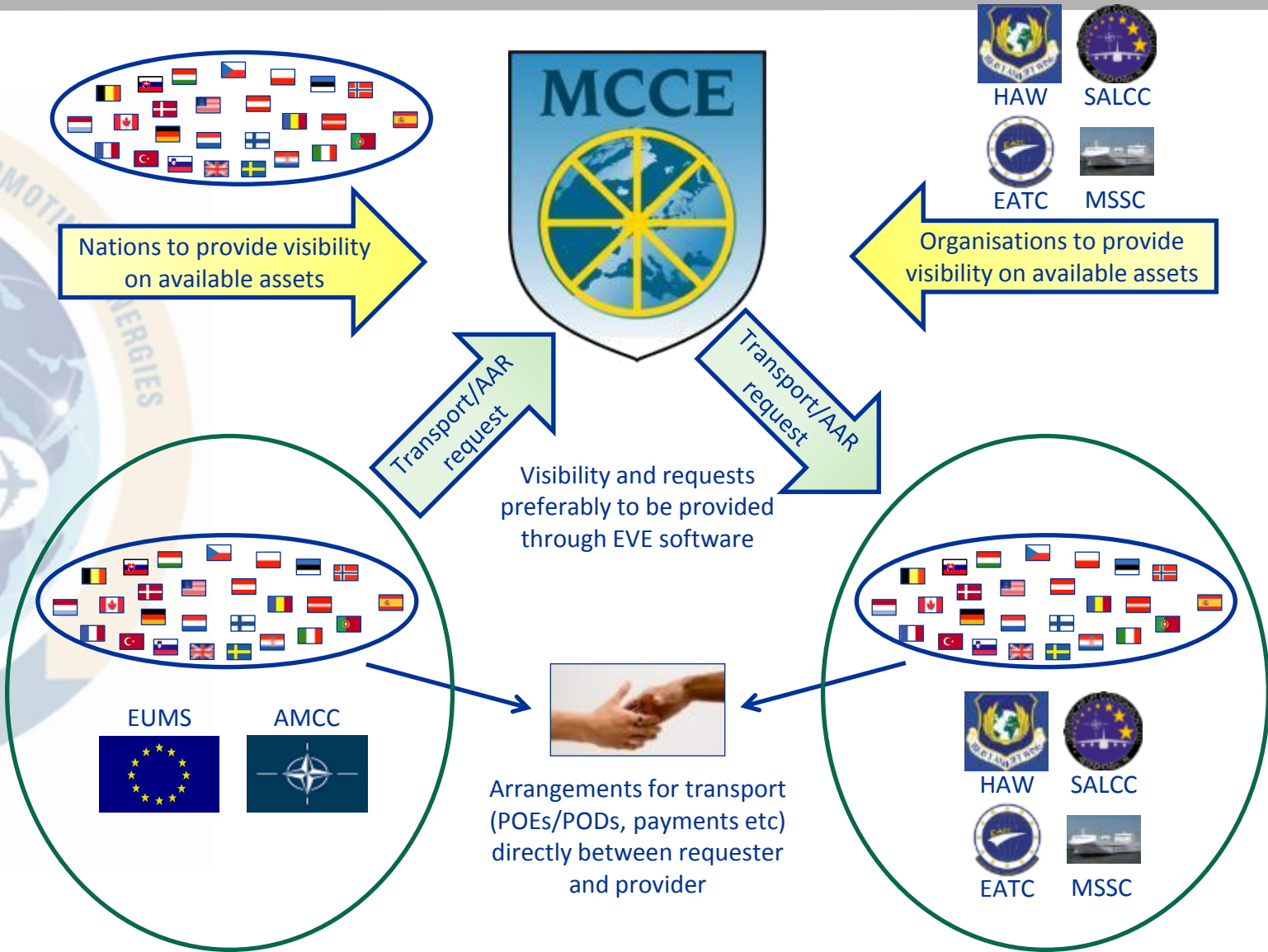
# Organisation chart







# Coordination process





# Agenda

1

Organization

2

Exchange of Services

3

The Cells

4

Cooperation

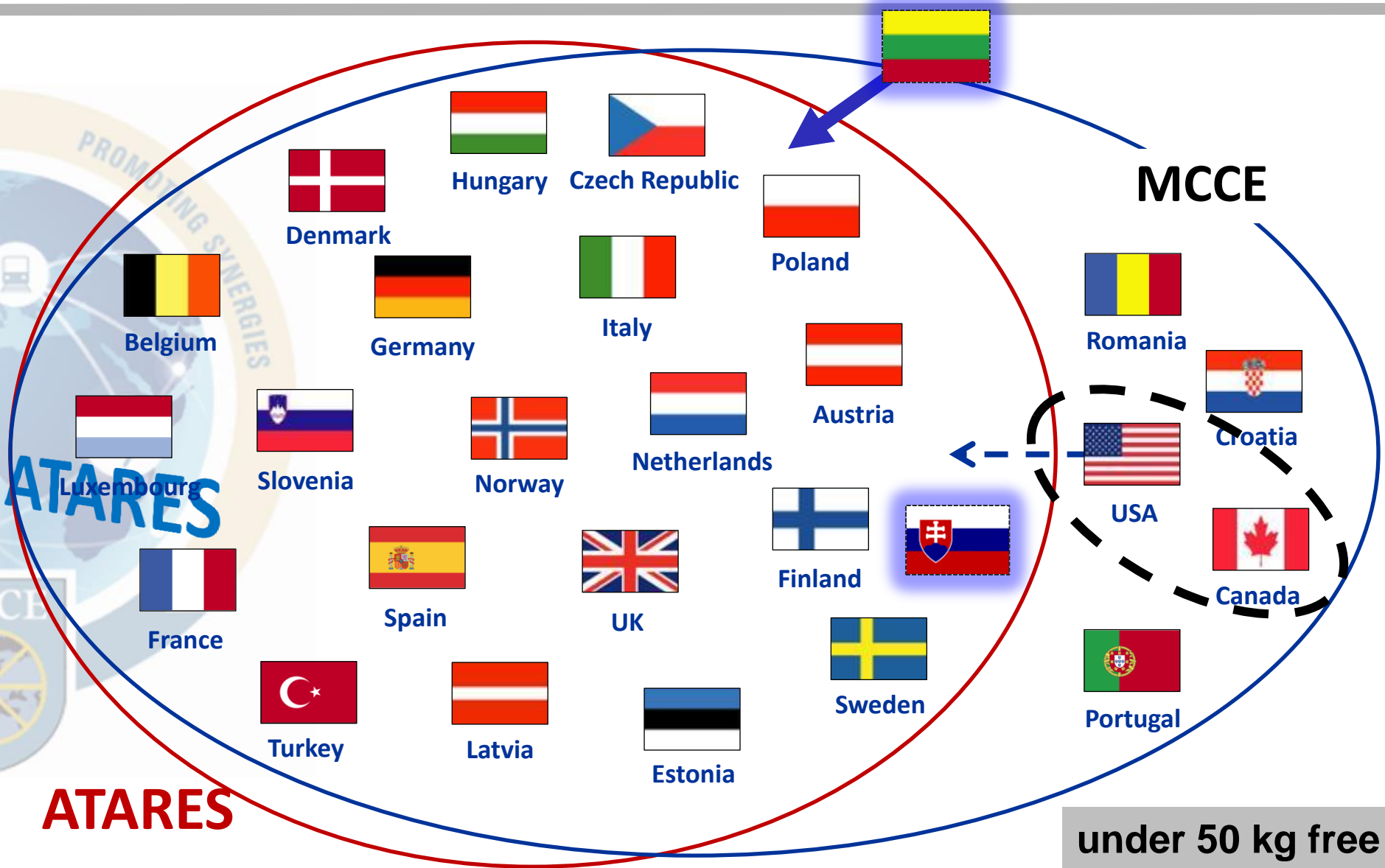
5

AoB





# 21 (1) ATARES participants

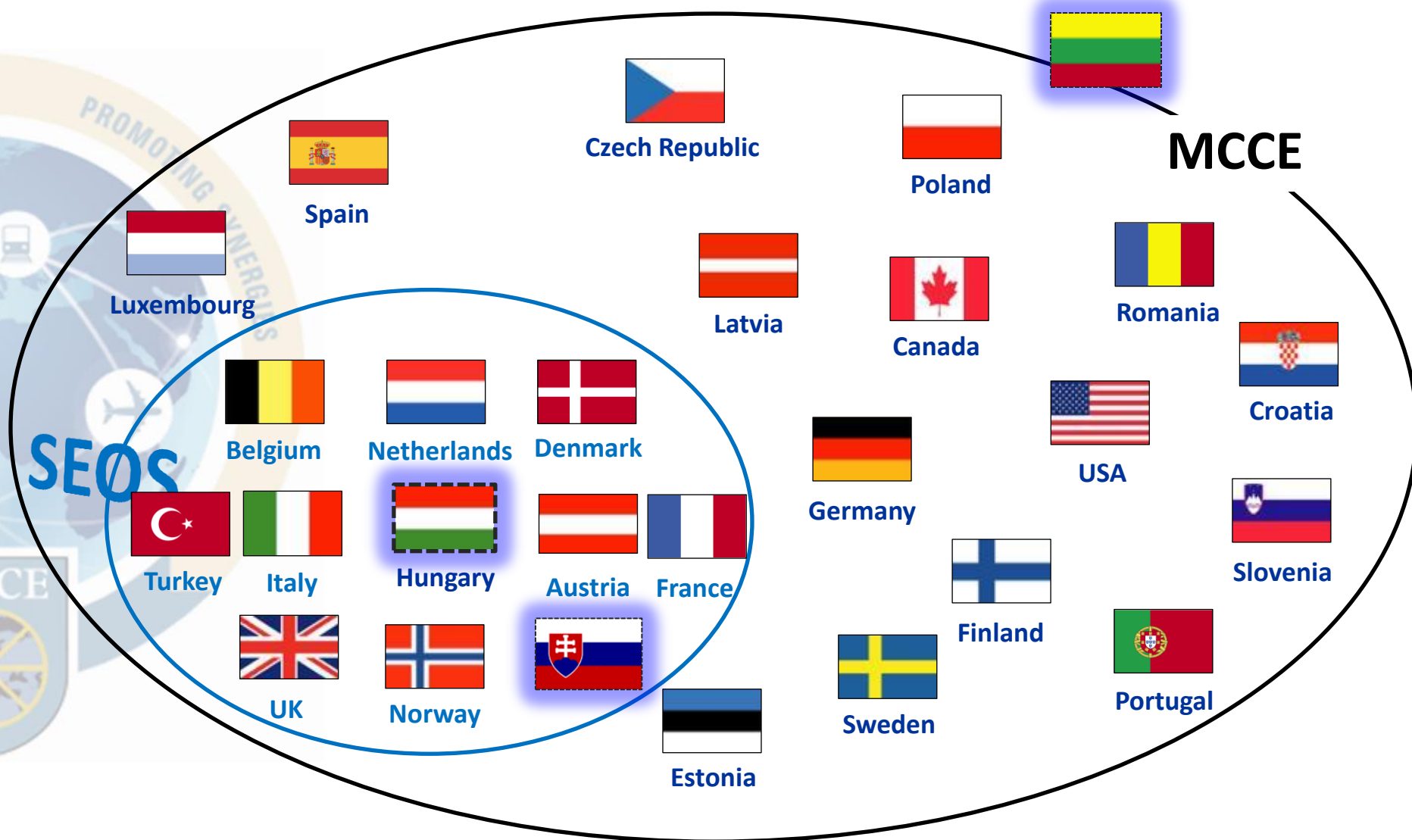


under 50 kg free



# 11 (1) SEOS participants

(Surface Exchange Of Services)



# Multinational Transportation Solutions



**SALIS (13)**

**ATARES (21)**

**HAW (12)**



**EATC**



**MCCE (26)**

--> Interested in Membership



# Agenda

1

Organization

2

Exchange of Services

3

**The Cells**

4

Cooperation





# Air Transport Cell

## Ch Ops

### P&P



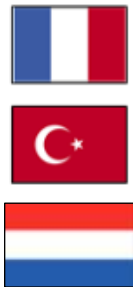
P&P  
(3)



AT  
(8)



AAR  
(4)




ST  
(2)



IST  
(4)

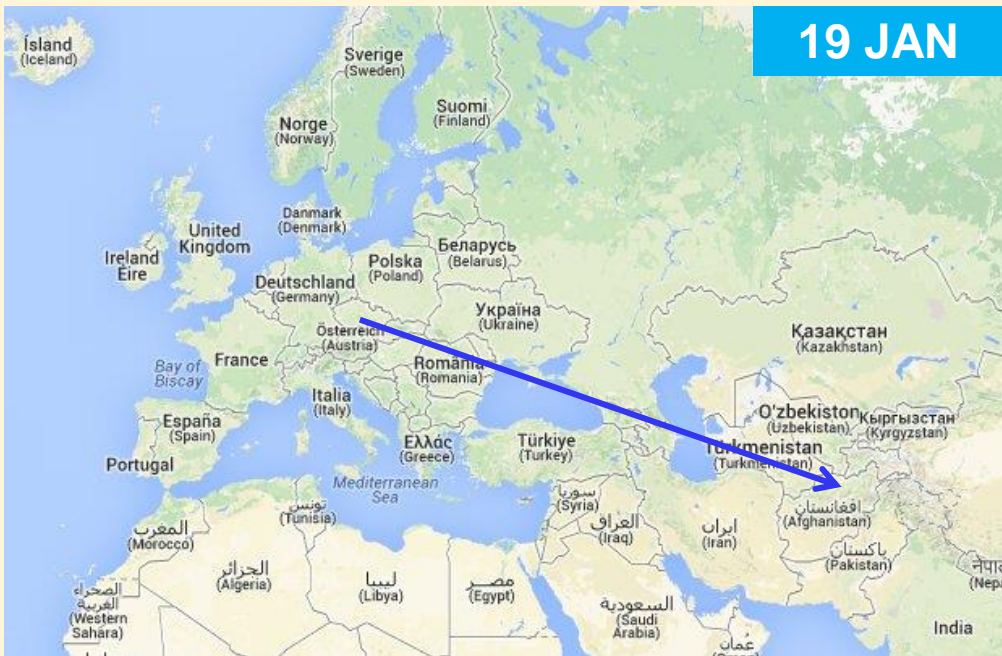


	<b>HUN Request</b>	<b>ATR: 15/0015</b>
--	--------------------	---------------------

Date:	15-20 Jan 2015
From:	Prague (LKPR)
To:	Mazar-e Sharif (OAMS)
Load:	10 PAX + 600 kg GC
Payment:	ATARES (est. 1,5 EFH)

	<b>NORDEF Mission</b>	<b>Booked</b>
--	-----------------------	---------------

ATM:	ATM 15/0006
Asset:	737-800 (Travel Service)
Date:	19 Jan
From:	As requested
To:	As requested
Load:	As requested
Payment:	ATARES



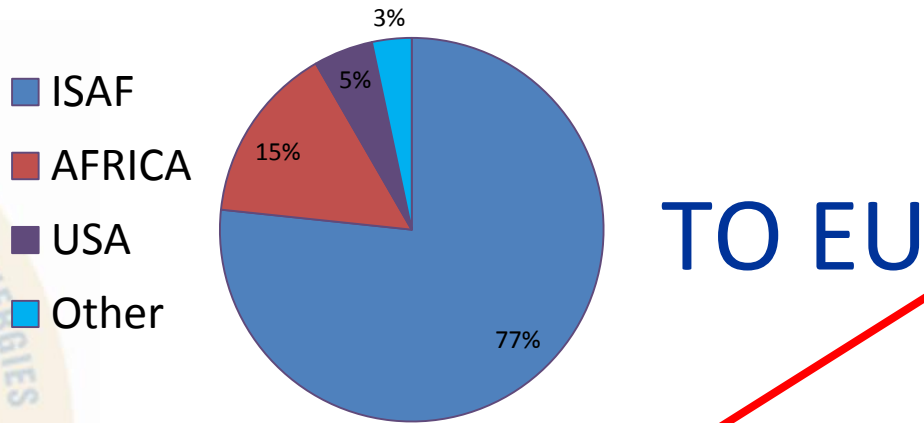
Remarks:





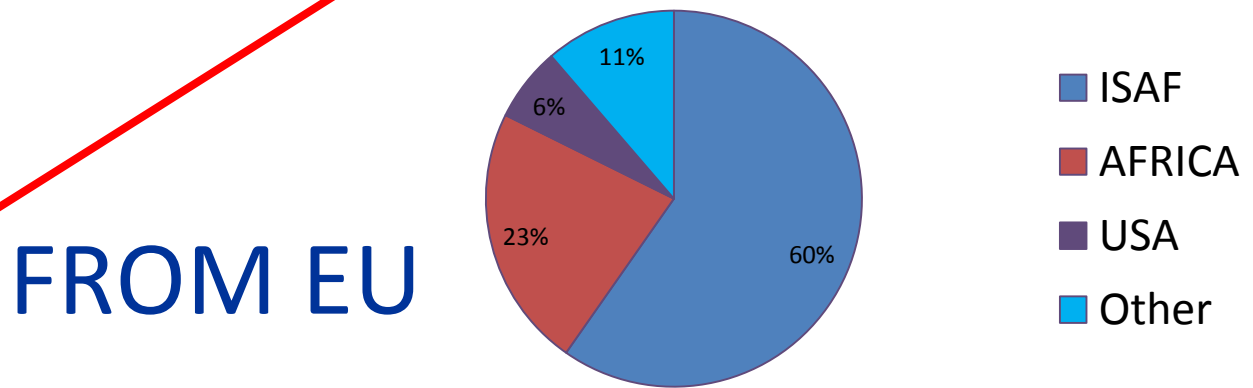
# MCCE AT : Requested Locations (from/to) - 2014

## Requested Locations from



TO EU

## Requested Locations to



FROM EU



# Bi-weekly Airlift Offer List

- Airlift capacity available for other nations
- More than 400 missions

<u>DATE</u>	<u>PROVIDER</u>	<u>NATION</u>	<u>AIRCRAFT</u>	<u>FROM</u>	<u>TO</u>	<u>PAYLOAD</u>
10/01/2015	EATC	NLD	(K)DC10	EHEH	GABS	PART-LOAD
10/01/2015	FRA	FRA	AN-124	ORBI	ORER	PL TBC
10/01/2015	FRA	FRA	C-17	FEFF	LFOA	PL TBC
10/01/2015	HAW	USA	C-17	LICZ	ETAR	EMPTY
11/01/2015	FRA	FRA	AN-124	UBBB	LFMI	PL TBC
11/01/2015	EATC	FRA	A340	LFPG	HDAM	PART-LOAD
11/01/2015	EATC	NLD	(K)DC10	LPPT	EHEH	PART-LOAD
11/01/2015	FRA	FRA	C-17	LFOE	DRRN	PL TBC
12/01/2015	EATC	DEU	A310	EDDK	CYYR	PART-LOAD
12/01/2015	EATC	FRA	A340	HDAM	LFPG	EMPTY
12/01/2015	EATC	NLD	(K)DC10	EHEH	GABS	PART-LOAD
12/01/2015	EATC	BEL	DA20	EBMB	EGNT	PART-LOAD
12/01/2015	NAEW	NAEW	B-757 Combi	ETNG	KNGU	PART-LOAD
12/01/2015	HAW	USA	C-17	EETN	LHPA	EMPTY
13/01/2015	EATC	FRA	A400M	LFOJ	LGAV	PART-LOAD
13/01/2015	EATC	DEU	A310	KIAD	EDDK	EMPTY
13/01/2015	EATC	NLD	(K)DC10	GABS	LPPT	PART-LOAD
13/01/2015	FRA	FRA	C-17	DRRN	LFOE	PL TBC
13/01/2015	NAEW	NAEW	B-757 Combi	KNGU	ETNG	PART-LOAD
13/01/2015	HAW	USA	C-17	LHPA	ETAR	PART-LOAD
13/01/2015	HAW	USA	C-17	ETAR	LICZ	PART-LOAD
14/01/2015	EATC	DEU	A310	KROW	KHMN	PART-LOAD
14/01/2015	EATC	DEU	A310	KHMN	KNQX	PART-LOAD
14/01/2015	EATC	NLD	(K)DC10	EHEH	ENEV	PART-LOAD



# Bi-weekly Airlift Offer List





# Channel Flights



**BEL – DNK – ESP – FIN – GBR – NORDEF – TUR**



# US Air Network



US Channel Network from Rota and Ramstein



# Examples using Airlift Offer List

 BEL Request	 HAW/NLD Mission
<b>Depart:</b> Papa <b>Arrive:</b> Mazar e Sharif <b>Payment:</b> ATARES <b>Load:</b> 13 tons general cargo	<b>Payment:</b> ATARES partload <b>Itinerary:</b> as requested <b>Asset:</b> C-17 <b>Load:</b> as requested

**SAVED €55.000!!!**

 TUR Request	 SALIS/BEL Mission
<b>Depart:</b> Ankara LTAC <b>Arrive:</b> Kabul OAKB <b>Payment:</b> ATARES or cash <b>Load:</b> 70 tons (3 vehicles, 2 trucks, 4 generators) and DG's	<b>Payment:</b> ATARES 20 EFH <b>Itinerary:</b> as requested <b>Asset:</b> AN124 <b>Load:</b> as requested

**SAVED €200.000!!!**



# Air to Air Refuelling Cell

## Ch Ops

P&P



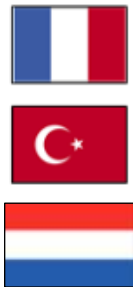
P&P  
(3)



AT  
(8)



AAR  
(4)



ST  
(2)



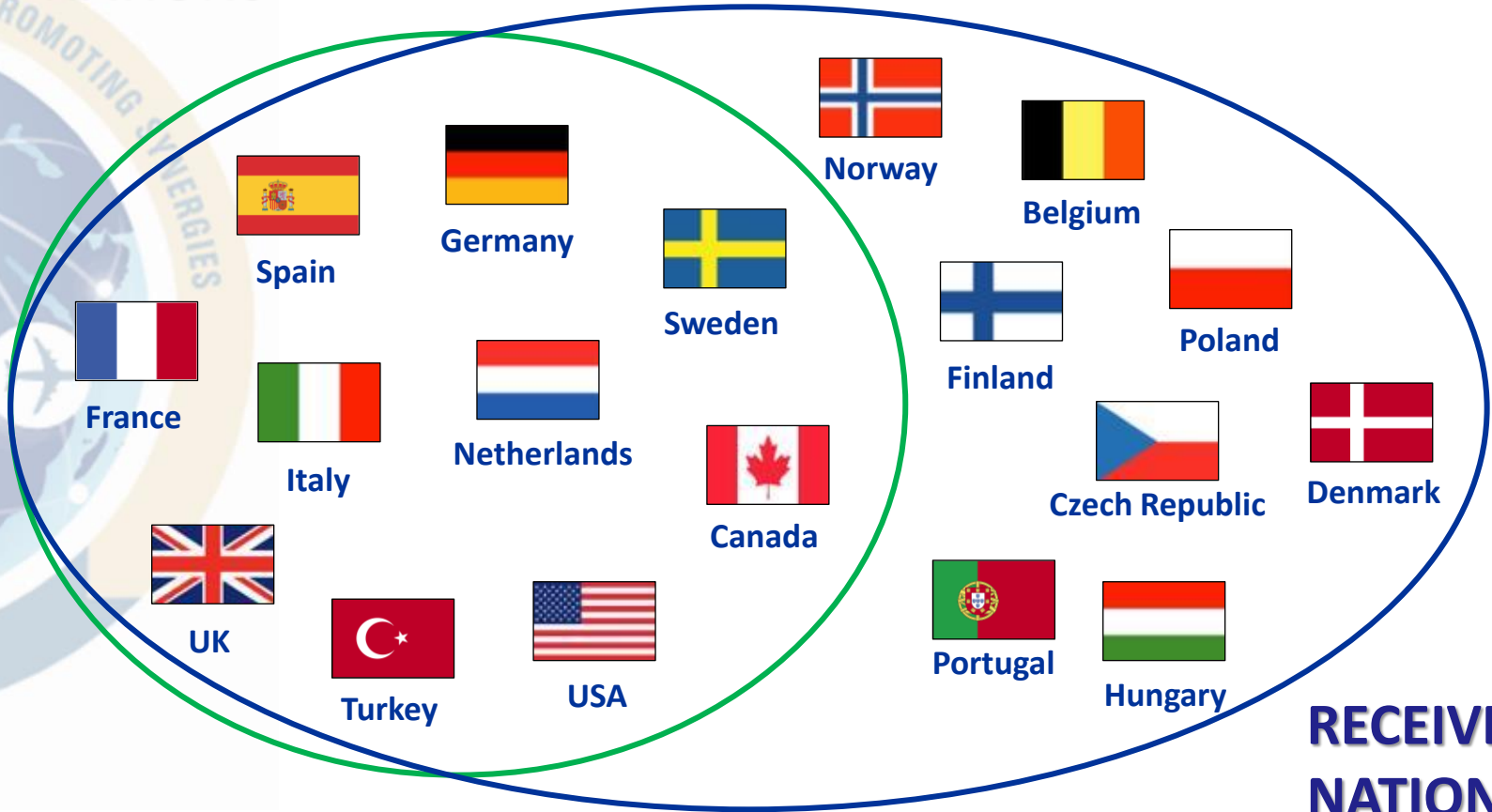
IST  
(4)





# 18 AAR-capable nations

## TANKER & RECEIVER NATIONS



## RECEIVER NATIONS





# Inland Surface Transport Cell

## Ch Ops

### P&P



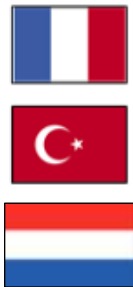
P&P  
(3)



AT  
(8)



AAR  
(4)

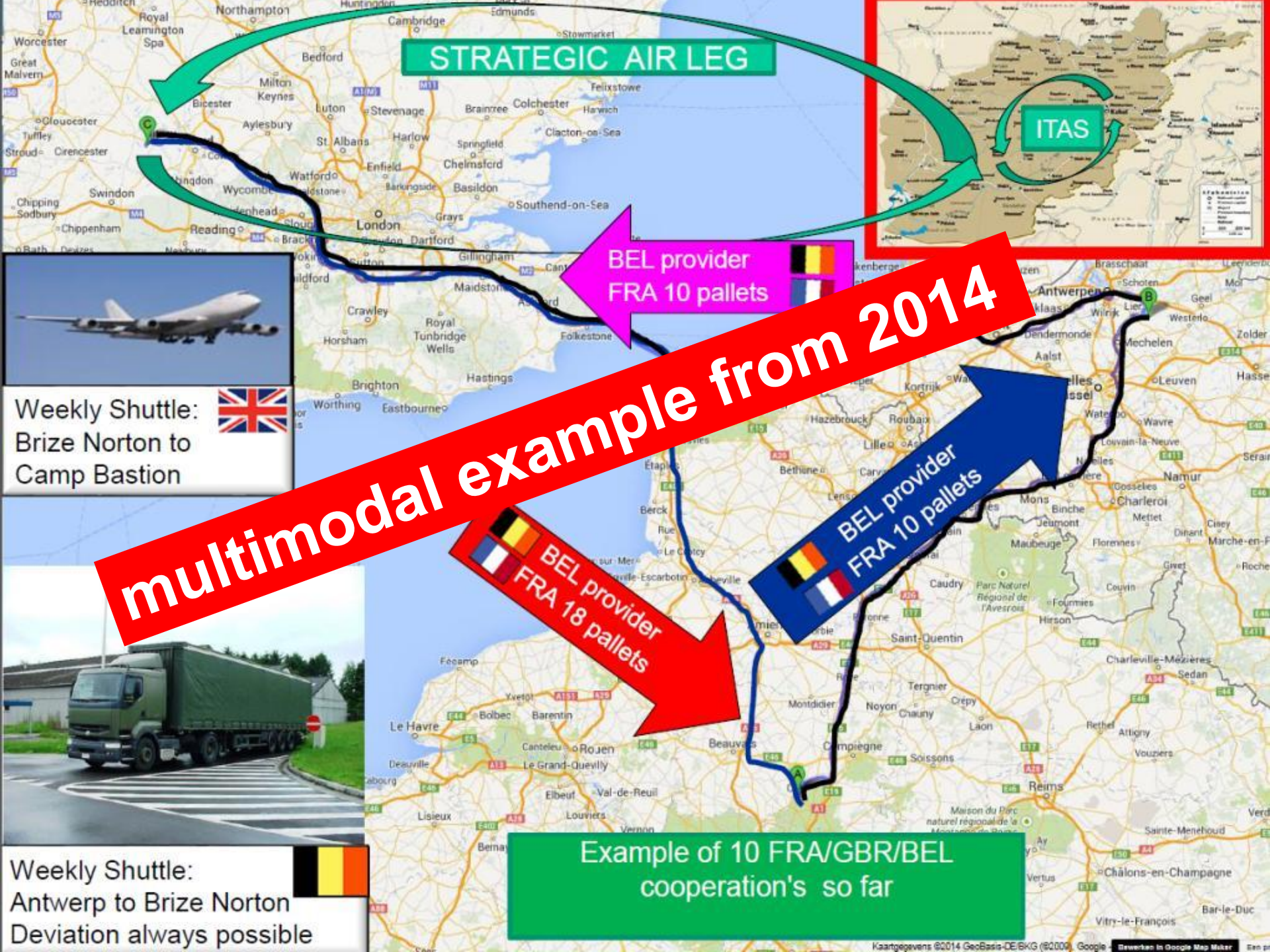


ST  
(2)



IST  
(4)





**STRATEGIC AIR LEG**



**BEL provider  
FRA 10 pallets**

**multimodal example from 2014**

**BEL provider  
FRA 10 pallets**

**BEL provider  
FRA 18 pallets**



Weekly Shuttle:  
Brize Norton to  
Camp Bastion



Weekly Shuttle:  
Antwerp to Brize Norton  
Deviation always possible

**Example of 10 FRA/GBR/BEL  
cooperation's so far**



# Sea Transport Cell

## Ch Ops

P&P



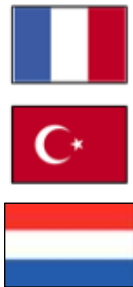
P&P  
(3)



AT  
(8)



AAR  
(4)



ST  
(2)

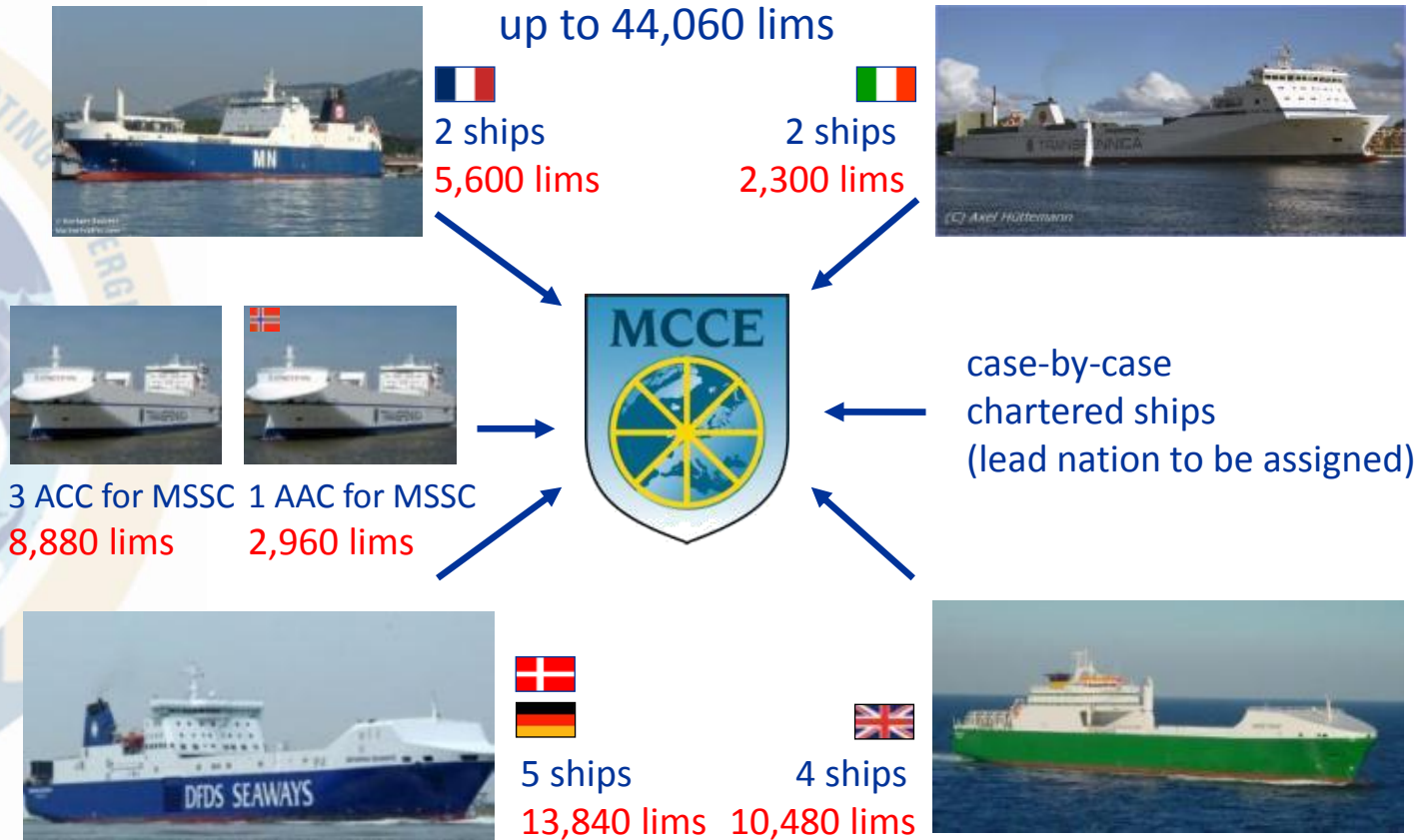


IST  
(4)





# Sealift Capabilities





## ISAF Redeployment – Central LOC



ARK SHIP



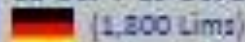
1<sup>st</sup> RoRo, cargo:

29-Jul -> 10-Aug 2013



2<sup>nd</sup> RoRo, cargo:

12-Oct -> 25-Oct 2013



(1,800 Lims)

3<sup>rd</sup> RoRo, cargo:

6-Feb -> 18 Feb 2014



(2,100 Lims)

4<sup>th</sup> RoRo:

26-Jun -> 9-Jul 2014



(1,800 Lims)

5<sup>th</sup> RoRo:

Autumn/Winter 2014



6<sup>th</sup> RoRo:

1 Quarter 2013





# Wrap up

- Summary

- The MCCE is a multinational centre that coordinates all modes of Strategic Lift and Air-to-Air Refuelling (AAR) capabilities for 26 Member Nations.
- The objective for the MCCE is to improve efficiency and effectiveness optimising synergies, i.e. to save money.
- The MCCE also provides coordination support to EU, NATO and Third Parties, including M&T and AAR expertise to relevant EU and NATO fora.

- Points to take away

- The MCCE saves money for its Member Nations.
- The MCCE has extensive and unique expertise in the field of multinational Strategic Lift and AAR.



# MCCE Website

<https://www.mcce-mil.com>



## Movement Coordination Centre Europe

Search this site

- AIR TRANSPORT
- AIR-TO-AIR REFUELLING
- SEA TRANSPORT
- INLAND SURFACE TRANSPORT
- PROJECTS AND PLANNING
- LINKS



### Welcome



The MCCE is a progressive organization, officially established in 2007 to address the recognized shortage of Strategic Lift (air and surface) by providing a multi-national coordinating body to optimize efficiency throughout the full spectrum of movements and transportation (M&T).

In simple terms, the main purpose of the MCCE is to provide cost saving alternatives for member nations by utilizing air, land and sea transport assets owned or leased by national militaries of our members or supported agencies.

The MCCE is located on the Eindhoven Military Air Base in The Netherlands alongside the European Air Transport Command (EATC).

On 13 June 2007, 15 Nations signed the MCCE Technical Arrangement (TA): Belgium, Canada, Denmark, France, Germany, Hungary, Italy, Latvia, The Netherlands, Norway, Slovenia, Spain, Sweden, Turkey and the United Kingdom. Luxembourg, Estonia and Finland signed in the fall of 2007. Poland, Romania and the United States signed in 2008. Austria, Portugal and the Czech Republic in 2010 and Croatia in 2011. As of Jan 2014, the MCCE has 25 member nations.

### MCCE Mission



The MCCE Mission is:

The MCCE Mission is to: Coordinate Participants' Strategic lift (Air, Sea and Inland Surface Transport) and Air-to-Air Refuelling capabilities with Operational, Exercise and Routine requirements for lift and AAR in order to improve efficiency and effectiveness through identifying available assets, advertising these assets and then coordinating their use to the maximum extent possible.

- Be prepared to provide coordination support to EU or NATO operations.
- Be prepared to provide coordinating services to Third Parties if proposed by a Participant.

Sharing, Willingness to cooperate and Visibility of requirements and opportunities are the 3 key elements vital to the success of the MCCE mission.

Worldwide 24/7 operational. [Contact info](#)



#### Organisation

The MCCE consists of a group of 25 willing nations.  
The MCCE Steering Board (SB) is the highest decision



#### News / Info

MCCE Newsletter 5, 3 October 2013  
MCCE at a Glance, November 2013



#### Contact Information

Wegbasis Eindhoven / Koninklijke Luchtmacht  
Flight Forum 1550 Building 551  
5667 EZ Eindhoven



# MCCE Newsletter

## Projects & Planning Cell

### Main Topics

- EUNATO: Support of EUMS with CAR mission continues.
- NATO HQ AIRCOM: Visit arranged to the MCCE to discuss forward based Air Lift Coordination Centre (ALCC) concept and development of MCCE AAR support to NATO exercises.
- SEOS: Advertising of the benefits of the MCCE exchange of services took alongside real life examples of ATARES and SEOS exchanges saw interest from HUN, EST and GDU to join SEOS.
- AAR: Interoperability: Engagements with the EAO has begun to address the load clearance and preparation issues faced by member nations when using each others ac.
- Africa: Engagement continues with the EUMS and member nations regarding the development of logistics coordination in Africa.
- Multinational Requests: Active promotion of multinational solutions has provided benefits to member nations with the recovery of equipment from Africa and the multinational use of the GBR 747 facilitated by using the air leg with regular trade routes by BEL.

## Air Transport Cell

### Meetings

19<sup>th</sup> MCCE AT/ 18<sup>th</sup> SALCC meeting will be held in Budapest (HUN) - 3-4 of Nov.  
2<sup>nd</sup> MCCE AT/NAW/SALCC Conf: May 2015 in Sweden - 50 planned participants

### Main Topics

- Northern Iraq: The AT Cell continues to operate as a multi-national fusion cell leading the coordination for the deployment of aid to the Kurdish Peshmerga in Iraq; in this vein, they are the single agency synchronizing deployment efforts between 15 countries.
- Channel Flight: During the last AT meeting in Toulouse MCCE identified 14 different channel flights provided by four nations. Our intention is to increase this number and find more regular flights to provide more effective use of Air transport.
- USTRANSCOM: In partnership with USTRANSCOM, AT Cell is working to re-do the US Defense Transportation Regulations in order to dial the processes down to make it easier for partner nations to use the US transportation system.

## MCCE - Snapshot of last 6 months

### Membership update:

Accession of new MCCE nations: SVK (Silent Procedure approval on 4 Oct 2014)  
Accession of new ATARES nations: USA still ongoing, SVK pending.  
Accession of new SEOS nations: SVK pending, HUN in accession process and EST are interested.

### Manning:

P&P: Sgt Ldr M Wheldon (GBR) will be replaced by Sgt Ldr O'Neill (GBR) in Oct.  
AT: Maj J Kozielec (SWE) was replaced in Aug by Capt JP Archer (NOR)  
Maj M Amarnz (ESP) was replaced in Aug by Maj O Barba (ESP)  
EST: Maj T Lovemans (CAN) left in Aug and is yet to be replaced.  
AAR: Capt C De Greef (BEL) was replaced in Jul by Capt E Basiau (NLD)

### Topics:

ATARES: SVK have requested to join to the ATARES TA upon successful accession to the MCCE  
SEOS: An official request to join SEOS from HUN and SVK will bring SEOS membership up to 11 member nations. TUR are finalizing legal issues restricting their ability to raise exchanges. EST have also requested information regarding SEOS membership.  
COOPAS: M&T Fundamental Course was facilitated by Capt Kirk from the ST Cell at the MCCE from 7-11 Apr 14.  
AAR Cross Certification: The AAR Cell continues with efforts to complete cross certification missions for the ITA K767 by attracting fast jet nations requiring boom refueling.  
Ebola Crisis: Nations are conducting detailed planning in response to the Ebola epidemic in Western Africa.  
AAR: The latest of the new AAR ships was named AAR DANIA on 1 Jul.

## MCCE - Snapshot of next 6 months

### Nations requesting membership information:

As a new MCCE nation: LTU

### Topics:

COOPAS: M&T Fundamental Course planned for 13-17 Oct 14 at the MCCE.  
ISAF/RESOLUTE SUPPORT: Now that the BSA and SOFA have been signed, the redeployment transitions into the sustainment of RESOLUTE SUPPORT. Challenges will be faced in using the NLOC without a UNSCR to support Transit Agreements across transit nations.  
Support to EUNATO: Development of the relationship with both agencies will continue, including support to exercises and operations in Europe and Africa.  
EUMS/ CAR/ Interoperability: Continue with operational planning and move towards the redeployment of the SLURCH from CAR.  
Multinational Planning: Continued promotion of multinational solutions and the use of the exchange of services tools (ATARES and SEOS) to maximise efficiencies and save money.  
Risk Cases: MCCE are assisting with M&T SME advice and a future role as an information hub between member nations and supported agencies seems likely.



## Strategic Air Lift Interim Solution (SALIS)

Commanding Officer SALCC  
Tel: +31 40 296 6991  
Email: [salcc@salis-airc.org](mailto:salcc@salis-airc.org)

### Meetings:

18<sup>th</sup> SALCC Ops meeting in Budapest (HUN) - 5 to 6 Nov 2014  
19<sup>th</sup> SALCC Ops meeting in Sweden - May 2015

### Main topics:

Last 6 months activities: The activities were various and tense:

- Redeployment from Afghanistan
- Sustainment of operation in Mali
- Deployment of EUFOR in Central Africa

Next 6 months activities: Mainly the delivery of equipment to Iraq and the EUFOR redeployment from the Central African Republic.

AFG - Since the signing of the BSA/SOFA, the 'zero option' is no longer a concern so sustainment will transition from ISAF to RESOLUTE SUPPORT.

Extension of contract post 2014: decisions by mid October 2014.



## MCCE Newsletter No7 October 2014



While I hope you have all enjoyed the summer period, the return of autumn has made it clear that we are now facing a variety of global challenges that are stretching the national military assets and personnel of our member nations.

The emergence and escalation of tensions in Ukraine has resulted in focused exercise support from NATO to the Baltic states, Poland and Ukraine, with the MCCE receiving movement requests supporting Baltic Air Policing, the deployment of NATO advisory teams and the coordination of lift to major exercises such as SABRE STRIKE and RAPID TRIDENT.

The crisis in Northern Iraq caused by the rise of Islamic State and the subsequent delivery of critical supplies by member nations saw the MCCE form a crisis response cell to act as an information hub for approximately 3 weeks, linking donor nations to the key APOEs, to the staging bases and finally to the APD in Erbil, Iraq. At time of writing, it is looking likely that this crisis response capability will again be engaged as our member nations increase the scope of their response to the Ebola Crisis in Western Africa.

The MCCE has increased our engagement with member nations and the EU Military Staff, improving logistics coordination in Africa and supporting the EU Force in the Central African Republic and Mali. In order to exploit future synergies and directly benefit our member nations, we are also looking to develop our embryonic relationship with the UN.

The recently signed BSA and SOFA in AFG has seen a shift away from the threat of a 'zero option' for the ISAF redeployment to a phased reduction of ISAF and transition to and subsequent sustainment of RESOLUTE SUPPORT (RS) beginning in Jan 2015. The success of the GBR 747F channel flight to/from AFG for MCCE nations such as FRA, BEL, NLD and DNK with payment in ATARES has demonstrated the utility regular channel missions can provide, achieving considerable savings for requesting nations and earning EFH for GBR. The NLOC TALJKGZ/KAZ (TKK) proof of principle was a success, proving to be quicker and cheaper than the standard route via UZB. Future sustainment options for RS via the NLOC are being investigated, with a likely route via TKK, from KAZ across the Caspian Sea to AZE and then west using parts of the 'new Silk Road'.

Our core business of providing matches to utilize offers and satisfy requests from our member nations and supported agencies has kept the operational cells busy, however, I must remind you that those member nations that benefit the most from their membership are the ones that are most proactive in engaging at all levels with the MCCE.

Available on request from MCCE or via the MCCE Website [www.mcce-mil.com](http://www.mcce-mil.com)





# Questions?

